



Northeastern

Reducing Central Line Infections in the Medical Intensive Care Unit

Dominic Breuer, Nicole Reppucci, Ali Hobbs

Healthcare Systems Engineering Institute

Northeastern University, Boston MA

www.HSyE.org

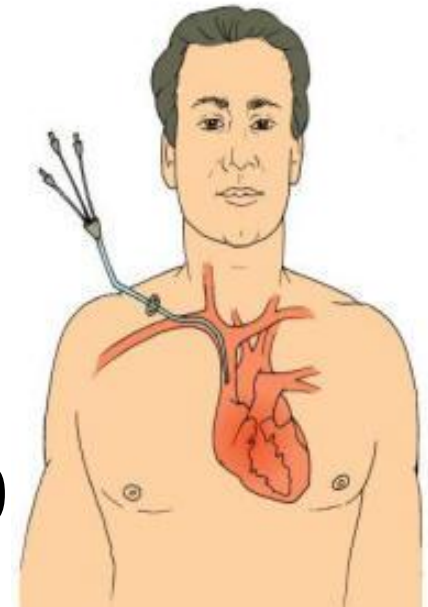


Boston HSyE Extension



Background

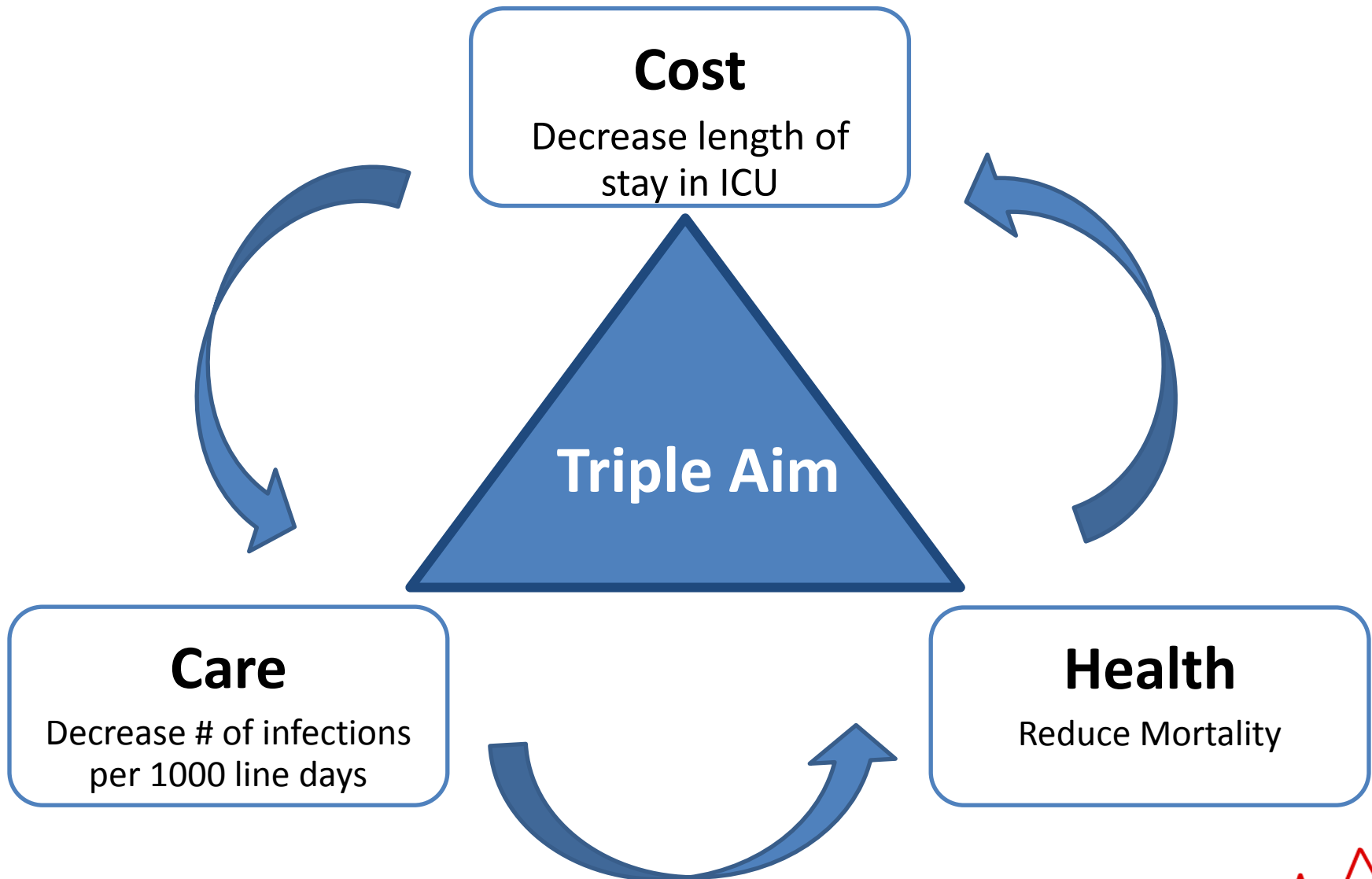
- CLABSI = Central Line-Associated Blood Stream Infection
- 12% - 25% mortality rate*
- Costs approximately \$30,000 - \$65,000 per CLABSI**
- CLABSI Rate = $\frac{\# \text{ of infections}}{\text{line days}} \times 1000$



*Center for Disease Control

**American Medical Association 2013

Reducing Central Line Infections in the Medical Intensive Care Unit



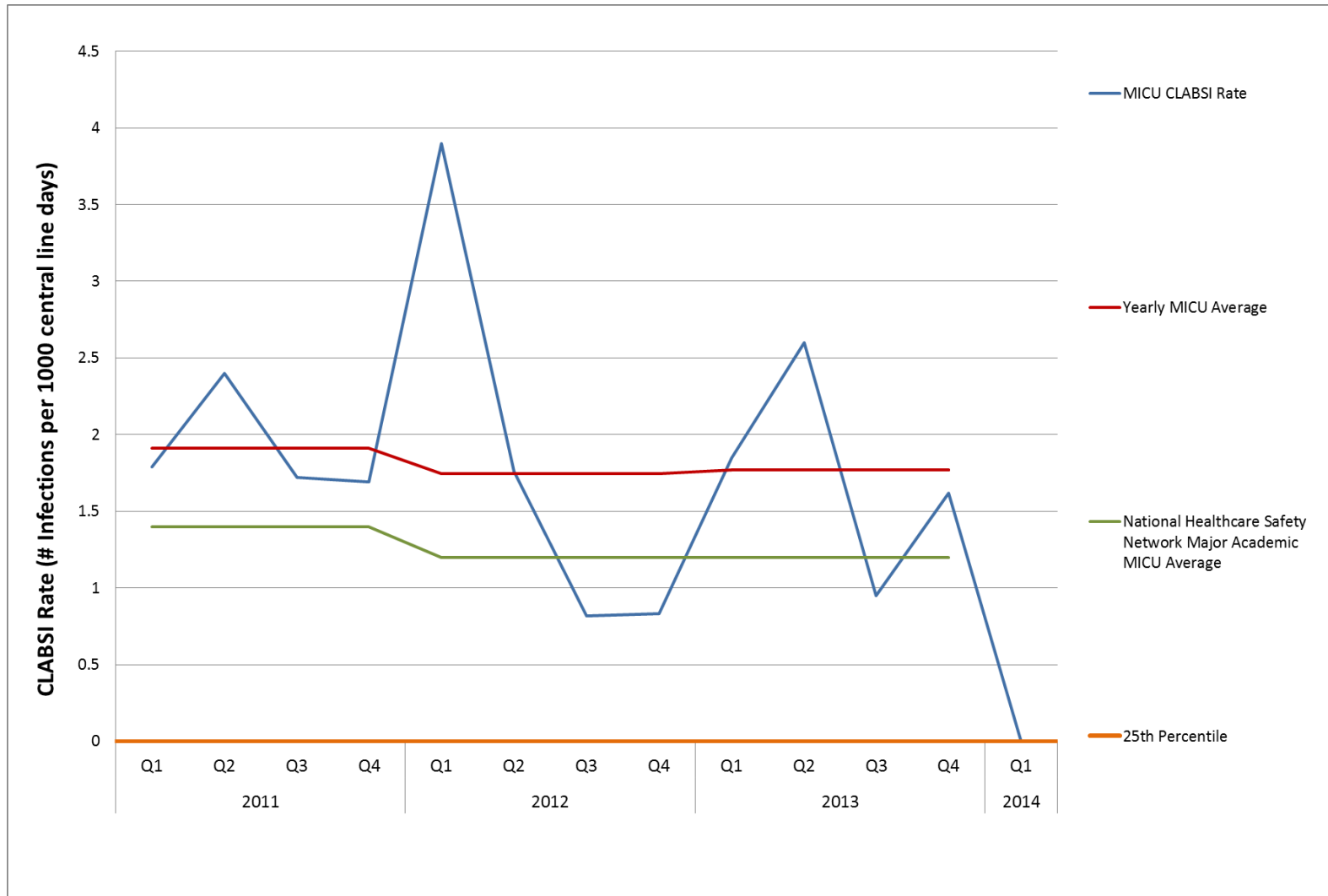
IE Methods Used

Human
Factors
Engineering

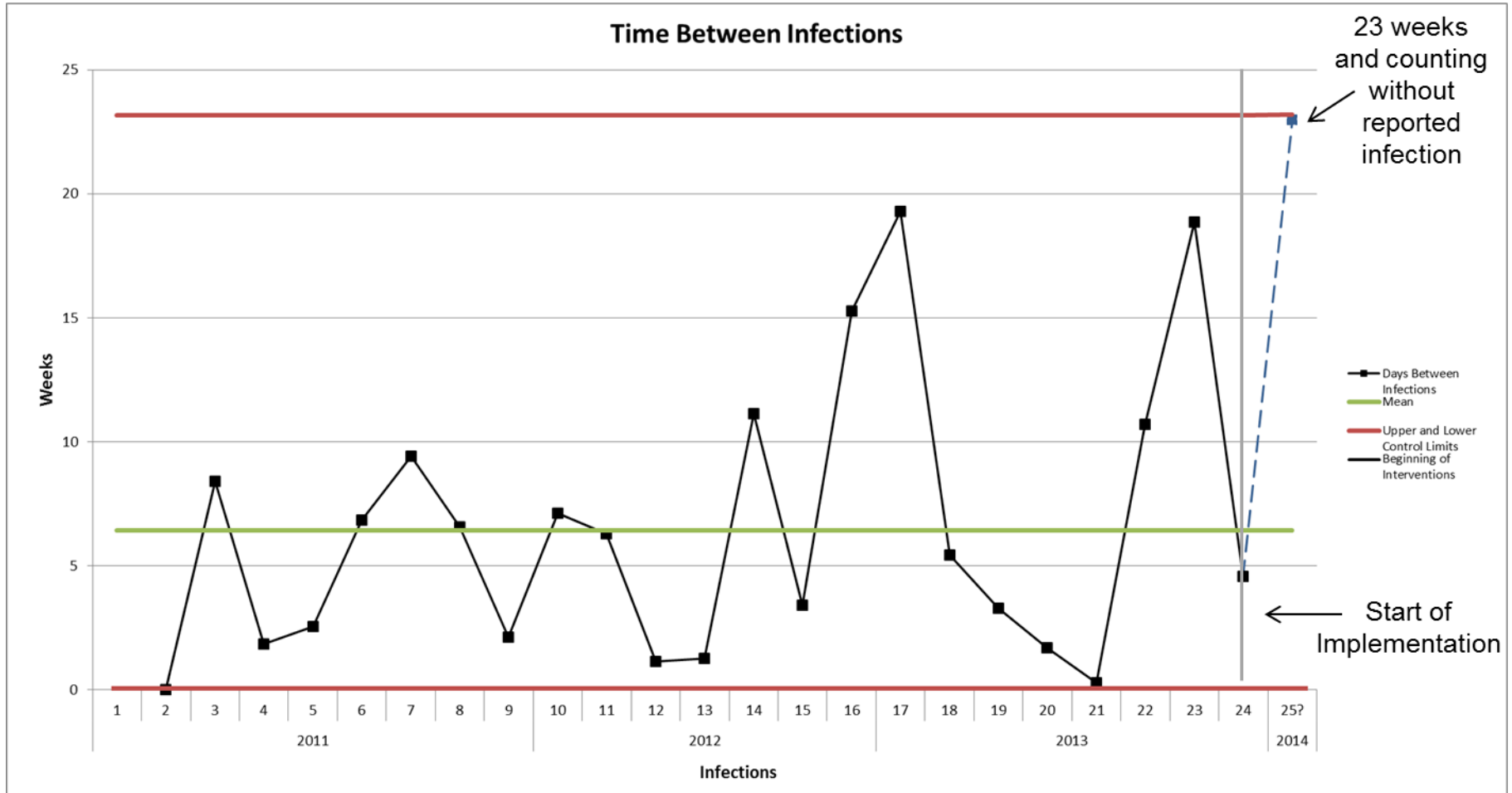
Data
Analysis

Social
Network
Analysis

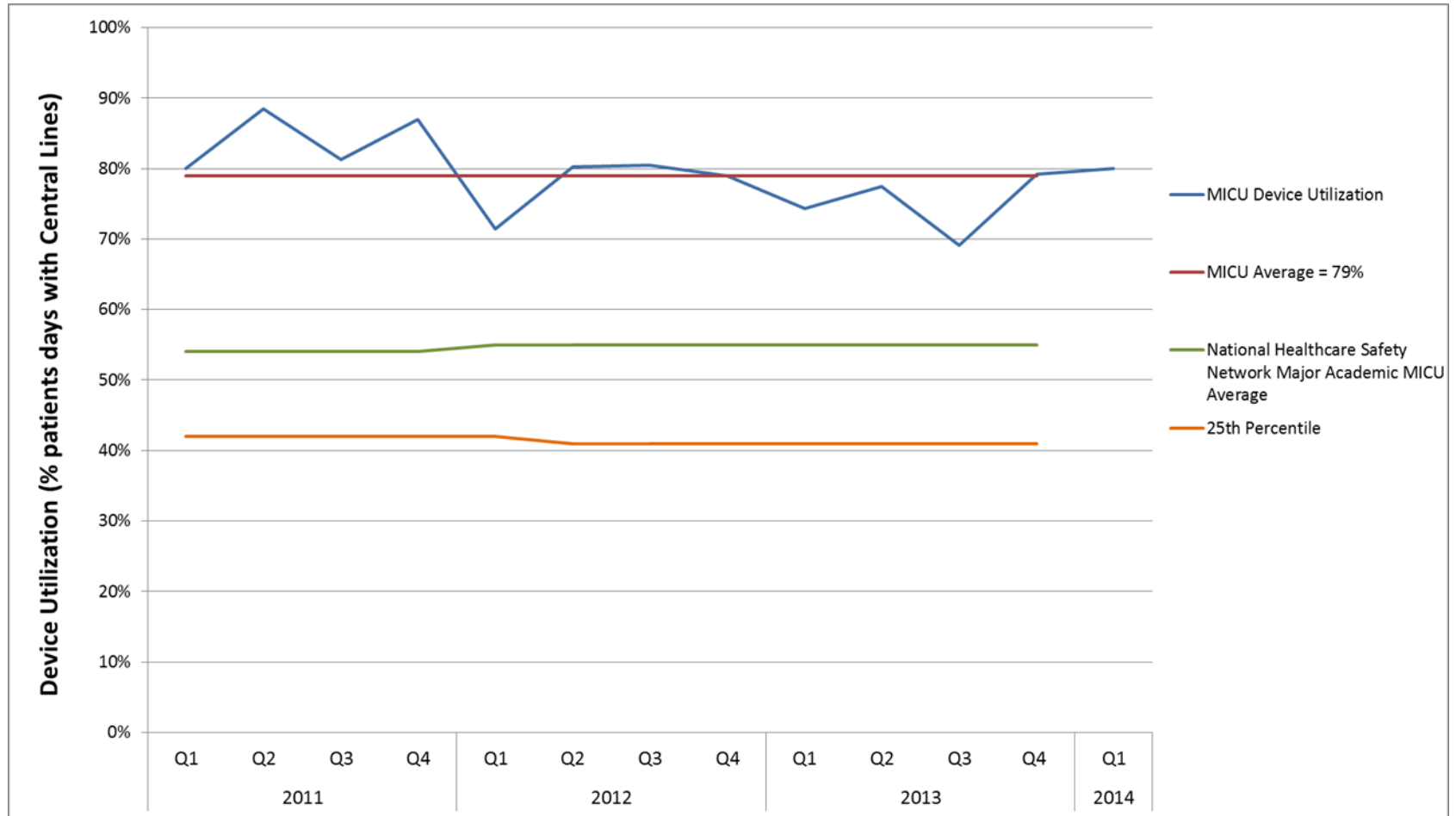
CLABSI Rate



Infection G-Chart



Central Line Device Utilization Rate



Interventions

Our Process: Staff Awareness and Motivation



Congratulations MICU
20 Weeks CLABSI Free!



Please enjoy a free beverage

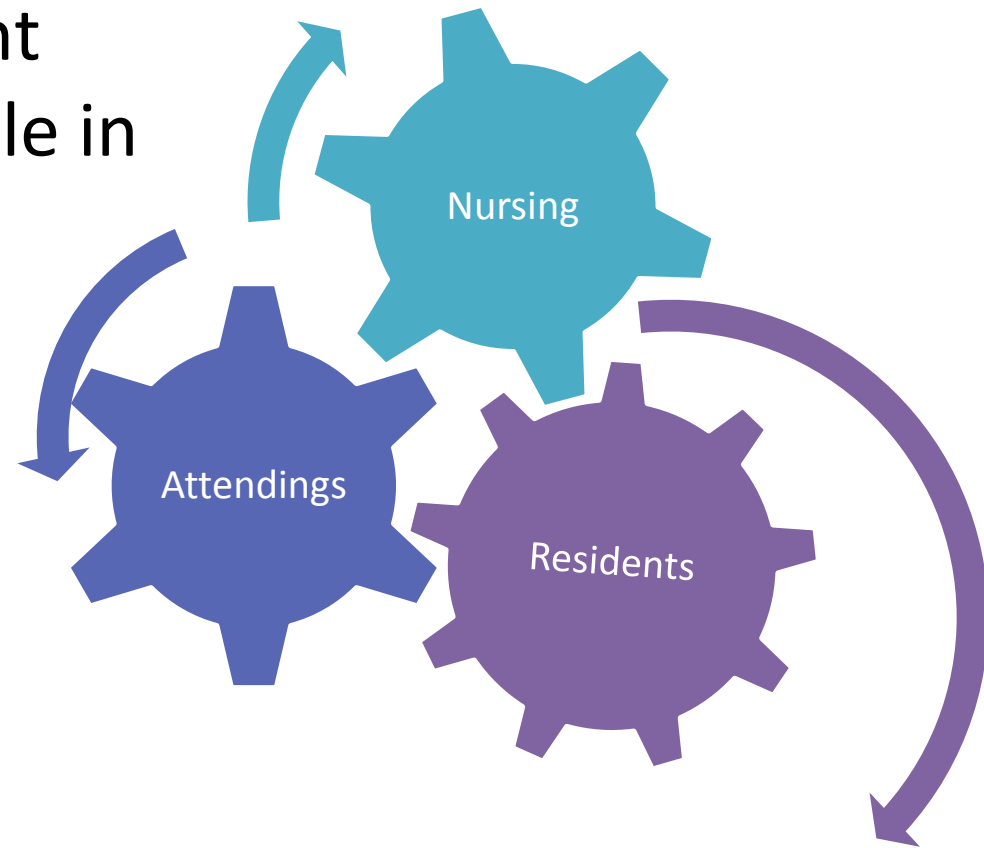
Tips for reducing central line infections:

1. **Speak up during insertion**
2. **Assure proper line maintenance**
3. **Scrub the hub for the full 15 seconds**

Expires July 31, 2014
Not redeemable for cash

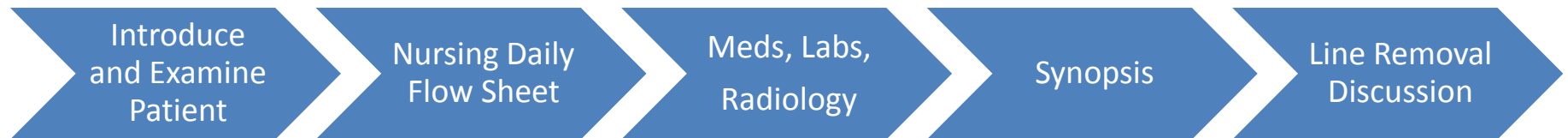
Our Process: Education Campaign

- Educated staff on current CLABSI data and their role in reducing rates
 - Insertion
 - Maintenance
 - Access
 - Removal

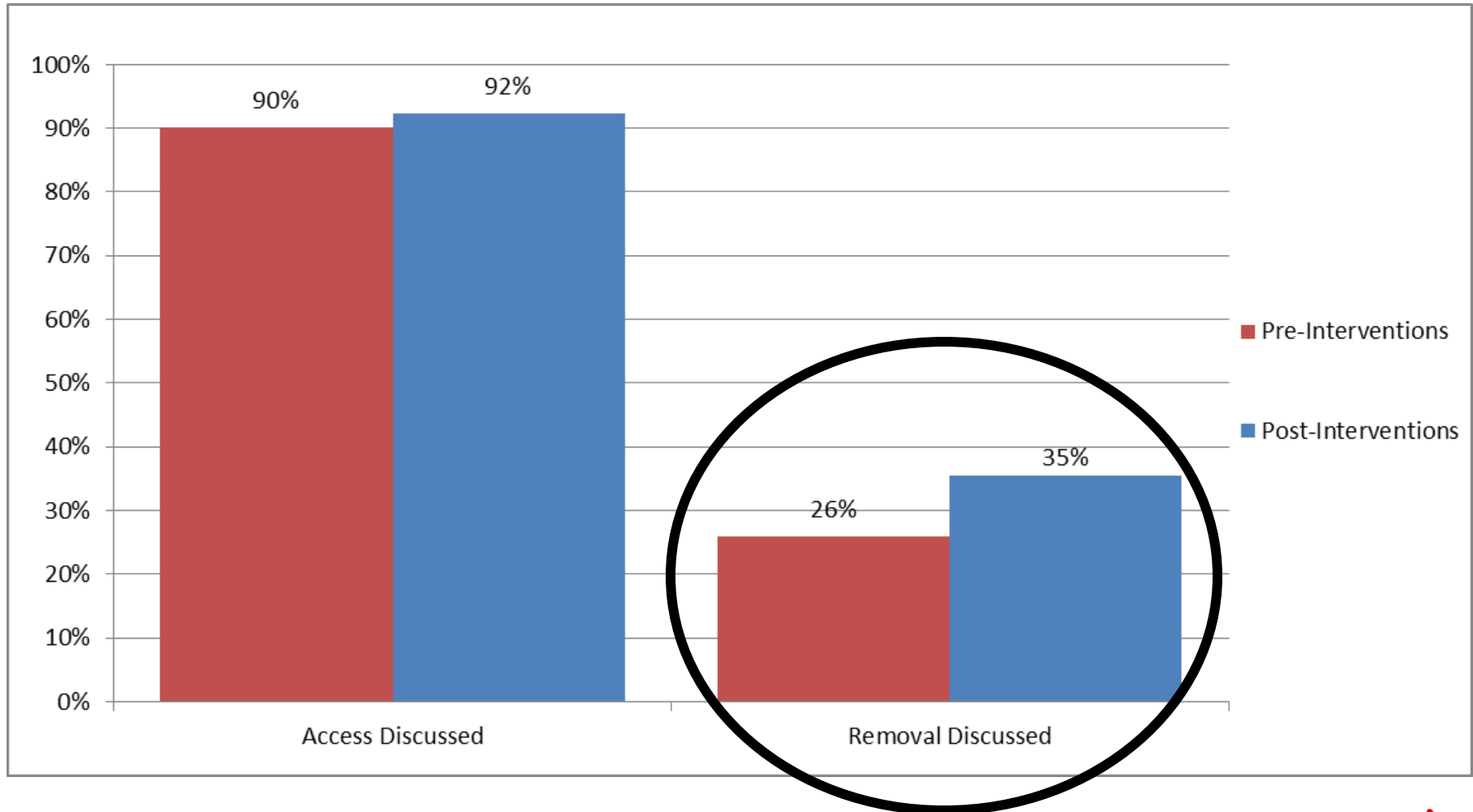


Our Process: Daily Line Review

- Nurse states line days and reason for central line
- During synopsis, intern running the plan will review the necessity of the line



Central Line Discussion on Rounds



Our Process: Sustainability Plan

Education for
New Nurses

Orientation for
New Residents

Staff
Awareness and
Motivation

Quarterly
Audits

Thank You
